

TDVI (WINDSOR) INC. PRESENTS

TOUR
-di Via-
ITALIA

Erie Street • Bike Racing
Since 1958



ROAD OCUP #2

Sunday May 31, 2026
Technical Guide

Event Contacts

Position	Name
Event Organizer	Pak Ho E: pakho01@gmail.com
Ontario Cycling Event Lead	Darren De Ruiter E: events.team@ontariocycling.org
Ontario Cycling Membership	Chris Baskys E: info@ontariocycling.org
Timing	Racetiming .ca Doug Pogue
Medical	St. John's Ambulance

Commissaires

Position	Name
President of the Commissaire Panel	Benjamin Hill
Finish Judge	Rebeca Ferreyra
Member	Steve Head
Member	Brade Slade
Mentor	Kevin Scheerer
TA	Elijah McCaffrey

GENERAL INFORMATION

Course: The course is completely flat with four corners (4 right turns) and a lap distance of approximately 1.8km (the first corner is a traffic circle). The course will be closed for all races. The start/finish line is located on Erie St. E between Marentette Ave. and Elsmere Ave. From the start line the course direction is clockwise in the order of Erie, Parent, Giles, and then Howard. The wheel pit is located at the intersection of Marentette Ave. and Erie St. E.

Parking: There is plenty of parking available in nearby municipal parking lots and on side streets where there are no restrictions.

Pre-Riding: There is no pre-riding allowed on the day of the race.

Warming Up: Riders are encouraged to bring rollers or trainers for warming up.

REGISTRATION INFORMATION

Sign-in will take place at the start/finish at 836 Erie Street E, look for the big sign that says 'REGISTRATION'.

	Entry Fee	Entry Fee at Second Race
Online Registration	\$60 + HST	\$30 + HST
U13 / U15	\$15 + HST	N/A
Kid's Event	FREE (Registration/waiver required on day of event) <u>Not Sanctioned by Ontario Cycling</u>	

Pre-registration available online at CCN

- All participants must have a minimum challenge level membership. Racers participating in Cat A, Cat B, and Cat A Women must have a compete or UCI license. If a 15-17yr old rider is racing in Cat A, B, or A Women they also require a Compete or UCI license
- The above prices exclude CCN fees.
- *For example:*
 - *54-year-old male Category C racer may opt to race both the Cat C/D race as well as the following Master race.*
 - *Female rider that could race in the general Category C/D race then race in the women's only event later in that day.*
- Please note that there will be no day of registration for additional races and refunds will not be given if rider decides not to race either of the two events.
- A rider must withdraw prior to registration closing to be eligible to receive a refund. Once the registration period has ended, refunds are no longer available.

- All refunds are subject to a non-refundable processing fee (variable based on transaction value) plus a CCN refund administration fee.
- If an athlete withdraws from an event on race day, they are not eligible for a refund and the rider must inform a Commissaire of their withdrawal. Failure to notify may result in a fine.

RACE SCHEDULE:

Sign in/Registration: 9:00am - 5:00pm

Category	Start Time	Distance	Laps
Master 50+	10:00am	40km	22
B	11:15am	50km	28
C / D	12:30pm	40km	22
Kids's Event	2:00pm	Not OC Sanctioned	
U13 Boys / U13 Girls	2:31pm	14km	8
U15 Boys / U15 Girls	3:01pm	18km	9
Women A	3:40pm	54km	30
Women B / Master Women 40+	3:41pm	40km	22
A	5:15pm	72km	40

criterium OCup Membership Structure

Category	Age Range	Challenge Membership	Compete Membership	UCI License
Cat A	15+		X	X
Cat B	15+		X	X
Cat C	15+	X	X	X
Cat D	15+	X	X	X
Cat A Women	15+		X	X
Cat B Women	15+	X	X	X
U15	13-14	X	X	X
Master Women	40+	X	X	X
Master Men	50+	X	X	X

Ontario Cup Points - *New for 2026* Ontario Cup Points

Ontario Cup points are awarded to the top 20 finishers in each category (formerly top 15). Only riders who have an OC membership are eligible for OCup points. Riders who DNF (do not finish) are not entitled to OCup points. Riders who move categories during the season will not carry any accumulated points into their new category. OCup points earned will remain in the category they

were awarded within. Ontario Cup series champions will be decided by season ending OCup series point totals by a simple tally of all the points earned at OCup events for the current year.

To make the series title race tighter in 2026 and beyond, points awarded for each position have shrunk to a 1-point differential between each position (formerly a 2 or more-point differential between positions 1st-5th). Series points will be awarded as follows for all Ontario Cups:

Position	Points	Position	Points	Position	Points	Position	Points
1 st	20	6 th	15	11 th	10	16 th	5
2 nd	19	7 th	14	12 th	9	17 th	4
3 rd	18	8 th	13	13 th	8	18 th	3
4 th	17	9 th	12	14 th	7	19 th	2
5 th	16	10 th	11	15 th	6	20 th	1

**With 30 days or more notice to riders, double points can be offered.*

***Any riders competing with a non-member permit or residing out-of-province are not eligible to earn OCup points.*

With increased demand for OCup event hosting and greater variety of event type included within each series, Ontario Cycling is implementing a structure for lowest point score's to be dropped from the series ending points total dependent on how many events are held in a series. Where a riders lowest or zero (0) point scores from OCup events within a series are dropped from inclusion in the series total score according to the number of events held within the series for the year:

- 1-4 Events: All events are counted towards OCup points
- 5-6 Events: One (1) event is dropped from OCup points (event with least amount of points scored)
- 7+ Events: Two (2) events are dropped from OCup points (events with least amount of points scored)

EQUIPMENT

- The gear and equipment restrictions will follow the 2025 Cycling Canada Companion Guide
- The wearing of an approved helmet is mandatory
- Only bicycle conforming to UCI rules 1.3.001-1.3.025 are permitted for use.
- Riders are required to wear jerseys corresponding to the club or team printed on their license.
- Independent riders are required to wear a plain-colored jersey with no significant logos, team names or advertising displayed on them.
- OC Companion
 1. All onboard technology device(s) fitted on a bicycle must:
 - a. Be installed on a system designed specifically for bicycles and not affect the certification of any item on the bicycle.
 - b. Not cause a risk for the safety of any rider, and therefore, be affixed in a manner that ensures it is not susceptible of inadvertently dismounting or is non-removable.
 - c. The camera footage is not immediately available to the rider.
 2. No onboard technology is allowed to be affixed to the helmet.
 3. If a Commissaire feels that the technology is not properly affixed or safely secured, they may, at their discretion, ask the rider to either remove the technology or ask them to readjust to ensure that the device is safely affixed.
- Sleeveless jerseys are not permitted
- There will be no neutral service available. Riders suffering any mishaps should report to the designated pit area for repairs.
- Per Cycling Canada rule 1.3.031 N): At all times when participating in or preparing for an event held in Canada, all licensees who are mounted on a bicycle shall wear a securely fastened helmet that meets a recognized cycling standard for the specific discipline. Riders shall provide documented proof of this such as a manufacturer's label, upon request by event officials
- The use of glass containers is strictly prohibited during the race.

New 2026 UCI Road Event Equipment Regulations:

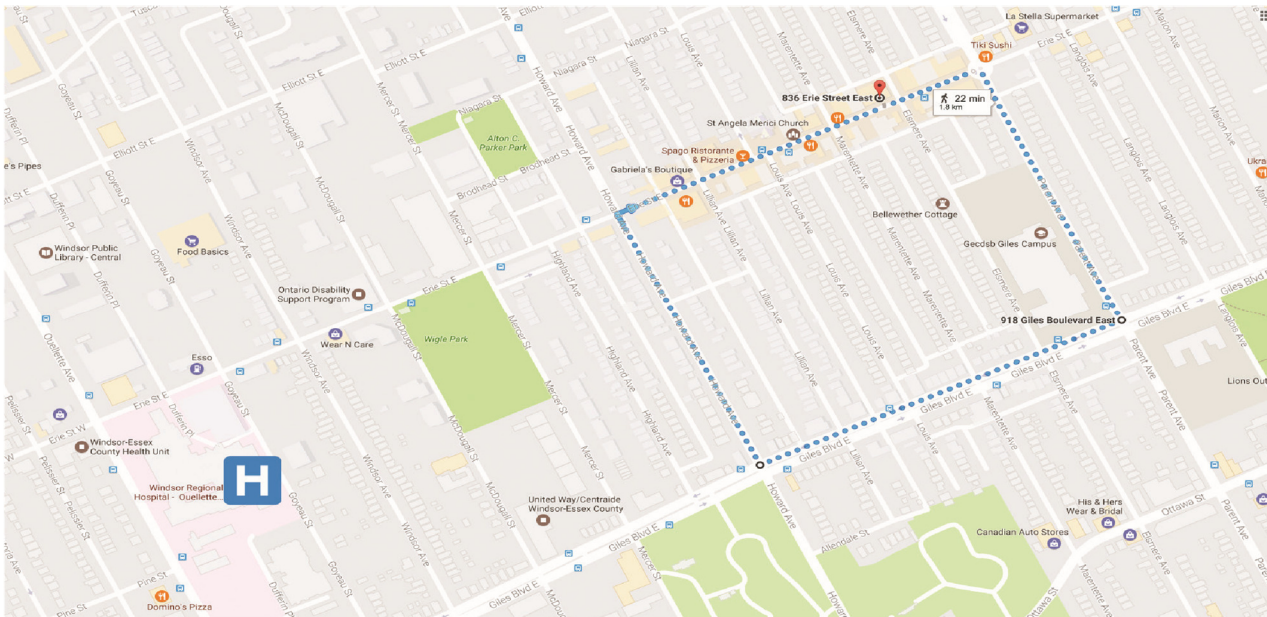
- Rim Depth – will be enforced at non-TT Road OCup/Provincial Championship events:
 - 65mm is the max wheel depth for non-TT road events
- Helmets – will **not** be enforced at OCup events in 2026 to allow for an adaptation period. The following rules will be enforced at the 2026 Road Provincial Championships and all applicable 2027 events. In addition to National & UCI events in 2026. Courtesy checks will be performed at 2026 OCup events in preparation for the rules being enforced provincially later this summer:
 - For all events outside of Time Trials, the helmet must have at least 3 distinct openings (inlets) on the shell structure (size is irrelevant, they can be meshed and need to allow for wind to get past the shell of the helmet).
 - Helmets must not cover the ears, not even partially, full ear must be exposed from the helmet. Skull caps/other fabric to cover the ears are permitted; just the helmet must not cover the ears itself.
 - Can't use integrated visors; sunglasses must be able to be worn independently of the helmet.
- Handlebar/Lever Dimensions – will **not** be enforced at OC sanctioned events in 2026, however the following rules will be in effect at National & UCI events in 2026. Courtesy checks will be performed at 2026 OCup/Provincial Championship events in preparation for the rules being enforced provincially in 2027:
 - Max horizontal inclination of the hoods is 10 degrees from the curvature part of the handlebar.

NUMBER PLACEMENT

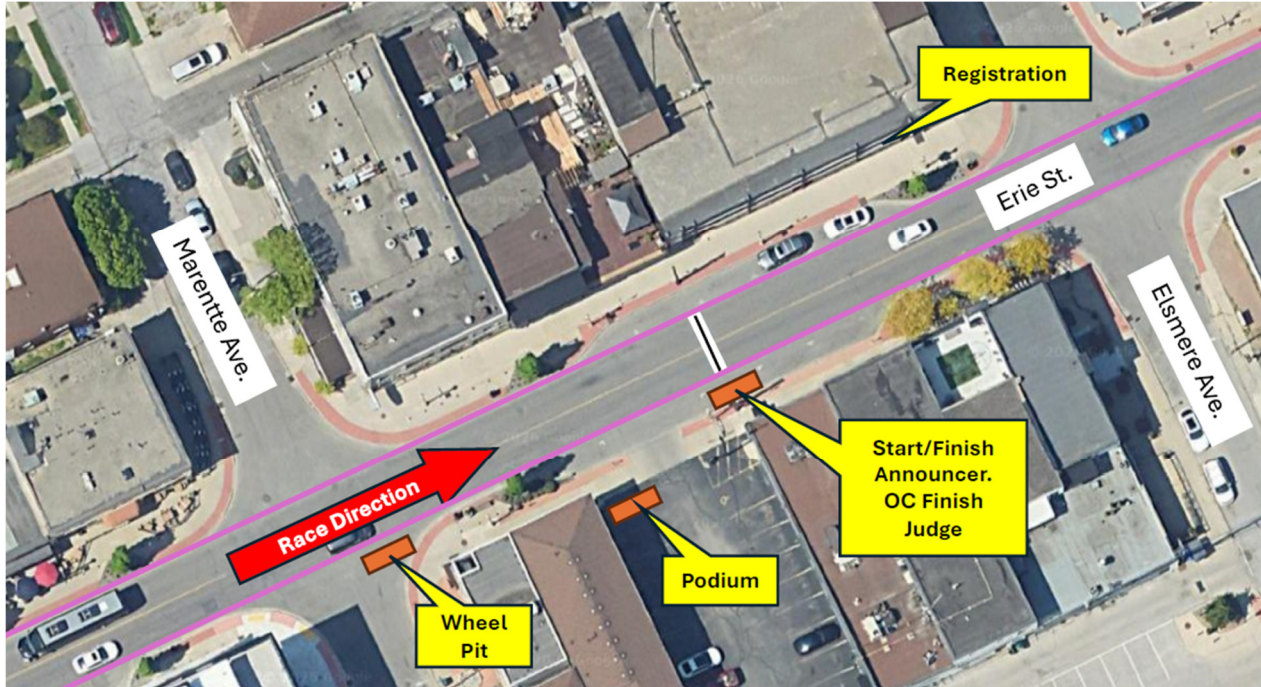
- Numbers must be placed on the right hip and lower right back. Your number must be visible to the camera, on the right side of the road. No altering of the race numbers is allowed.



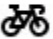
COURSE MAP



Start/Finish – Registration – Wheel Pit



COURSE DISTANCE & ELEVATION

Ride	Distance	Elevation Gain	Elevation Loss
	1.77 km	0 m	0 m

EVENT & COURSE SAFETY

- First aid will be provided by Border City EMS who will be located under a tent near the start / finish area.
- For your safety, if you withdraw from the event for any reason, you must inform the nearest Commissaire that you will no longer be racing. Riders not reporting to the Commissaire may be subject to a fine.
- Should a Commissaire or OC representative feel that a rider is unfit to race for any reason, the OC reserves the right to remove the rider from the event, for their own safety and the safety of others.

PARKING



SPECTATORS

- Spectators should always remain off the racecourse and remain behind any fencing around the course
- For your safety there is no climbing and hanging onto structures not designed for those purposes.
- No spectator should be accessing the racecourse any point throughout the event.
- OC does not permit any alcohol consumption at the event. Please refrain from bringing and consuming any alcohol during the event and throughout the event grounds including the racecourse.

NEAREST HOSPITAL

The closest hospital to the course is Windsor Regional Hospital - Ouellette Campus located at the corner of Erie St. and Ouellette Ave. It is 0.5km West of the race course. The Emergency entrance to the hospital is on Goyeau St. between Erie St. and Giles Blvd.

EMERGENCY NUMBER: 911

ACCOMMODATION

Official accommodation provider is local cyclist and racer Greg Brklacic at: Stonecroft Inn

3032 Dougall Ave.

Windsor, ON N9E 1S4

519-969-7600/800-665-6296

greg@stonecroftinn.com



GPS ADDRESS OF THE START/FINISH

836 Erie Street East, Windsor, Ontario, Canada

AWARDS

- Medals will be awarded to the top three (3) finishers in each category. Top 5 finishers are required to attend the presentation and are expected to wear their competition uniform for photos.
- Should categories be combined because of low participation numbers, results will be broken out for awards. Awards will be awarded based on the results of each category separated.
- Riders must attend the awards ceremonies or risk forfeiting their awards.
- Podium protocol shall be enforced, and fines issued to those who fail to comply.
- Riders must wear their competition uniform for medal presentations. Hats and/or eyewear are prohibited.
- Medal presentations will take place following the conclusion of each race.

PRIZES

	A	B	C	D	Master 50+	Women A	Women B	Master Women
1st	\$750	\$250	\$250	\$250	\$250	\$750	\$250	\$250
2nd	\$550	\$175	\$175	\$175	\$175	\$550	\$175	\$175
3rd	\$350	\$125	\$125	\$125	\$125	\$350	\$125	\$125
4th	\$200	\$75	\$75	\$75	\$75	\$200	\$75	\$75
5th	\$150	\$50	\$50	\$50	\$50	\$150	\$50	\$50
6th	\$125							
7th	\$100							
8th	\$90							
9th	\$80							
10th	\$70							
11th	\$60							
12th	\$50							
13th	\$50							
14th	\$50							
15th	\$50							

OVER \$9,000 IN PRIZES AND PRIMES

PRIMES: Yes there will be prizes!

ALL PRIMES are \$50 minimum (no merchandise). ALL ABOVE RACES will have multiple prizes.

NOTES / CAVEATS:

- All race categories that are “prized” will also have a podium.
- Final purse distribution for each respective category on race day is based on final number of registered participants and solely at the discretion of TDVI organizers.

- In the last 5 years, the TDVI paid out the total purse in all race categories EXACTLY as advertised. While we cannot guarantee payouts, we are confident that the purse payouts as noted for each category can be achieved.

GENERAL EVENT RULES AND REGULATIONS

- The races will be held under the rules of the UCI with CC and OC modifications.
- The CC & OC rules are available on-line at:
www.ontariocycling.org/commissaires/commissaires-rules/
- The penalty scale of the OC rule book will be applicable.
- Registration closes 30 minutes before the start of each race.
- All riders must sign in at registration.
- U.S. riders must present a UCI licence in order to enter this event. USAC Domestic Licences are not allowed in Canada.
- All foreign licensed riders other than U.S. riders must produce a letter of permission from their country's federation.
- An OC representative will be present at the race to assist with rider licensing issues.
- Races will start promptly at the indicated start times.
- There will not be a team managers meeting.
- There will not be any team vehicles or coach/parent ride-a longs permitted on the course.
- Any rider dropping out of the race shall immediately notify a commissaire.
- Awards will be presented according to the published schedule. Top-3 finishers are required to attend award presentations or risk forfeiting their awards. Riders must wear their competition uniforms for the presentation.
- In case of lightning, the race may be delayed or cancelled. If you are informed that the race has been stopped due to lightning, you are advised to seek shelter until the race can resume. No refunds will be issued.
- For your safety, if you withdraw from the event for any reason, you must inform the nearest Commissaire that you are no longer racing. Any unreported DNF may result in a severe penalty.
- You are required to wear an approved, regulation cycling helmet at all times while astride your bike, from the moment you arrive at the race until you leave. Non-compliance may result in a severe penalty.

SPECIFIC CRITERIUM COURSE RULES

- As this is a criterium race, riders will be given free laps for recognized mishaps (e.g. crashes and punctures). Improperly maintained bicycles resulting in equipment failure is not considered a recognized mishap. Riders suffering recognized mishaps shall head to the designated pit area via any means other than travelling backwards on the course, report to the Commissaire, and make repairs. At the direction of the Commissaire only, riders will be allowed to resume the race at the same location in the pack where they had their recognized mishap.
- The designated pit will remain open. After the leaders see 5km to go, no more free laps will be given after this point.
- There is no outside feeding allowed in this race
- Lapped riders may be pulled at the order of the Commissaires, either after being overtaken or just before being overtaken. Otherwise, lapped riders must remain separate, even when being overtaken by riders in their own group.