

TDVI (WINDSOR) INC. PRESENTS

TOUR
-di Via-
ITALIA

Erie Street • Bike Racing
Since 1958

SATURDAY, MAY 31, 2026
TECHNICAL GUIDE



GENERAL INFORMATION

Course: The course is completely flat with four corners (4 right turns) and a lap distance of approximately 1.8km (the first corner is a traffic circle). The course will be closed for all races. The start/finish line is located on Erie St. E between Marentette Ave. and Elsmere Ave. From the start line the course direction is clockwise in the order of Erie, Parent, Giles, and then Howard. The wheel pit is located at the intersection of Marentette Ave. and Erie St. E.

Parking: There is plenty of parking available in nearby municipal parking lots and on side streets where there are no restrictions.

Pre-Riding: There is no pre-riding allowed on the day of the race.

Warming Up: Riders are encouraged to bring rollers or trainers for warming up.

REGISTRATION INFORMATION

Registration will take place at the start/finish at 836 Erie Street E, look for the big sign that says 'REGISTRATION'.

	Entry Fee	Entry Fee at Second Race
Online Registration	\$60 + HST	\$30 + HST
Online U17 & U15 Registration	\$15 + HST	N/A
Kid's Event	FREE (Registration/waiver required on day of event) <u>Not Sanctioned by Ontario Cycling</u>	

Pre-registration available online at CCN

- All participants must have a minimum challenge level membership. Racers participating in Cat A, Cat B, and Cat A Women must have a compete or UCI license (youth are exempt).
- The above prices exclude CCN fees.
- *For example:*
 - *54-year-old male Category C racer may opt to race both the Cat C/D race as well as the following Master race.*
 - *Female rider that could race in the general Category C/D race then race in the women's only event later in that day.*
- Please note that there will be no day of registration for additional races and refunds will not be given if rider decides not to race either of the two events.
- A rider must withdraw prior to registration closing to be eligible to receive a refund. Once the registration period has ended, refunds are no longer available.
- All refunds are subject to a non-refundable processing fee (variable based on transaction value) plus a CCN refund administration fee.

- If an athlete withdraws from an event on race day, they are not eligible for a refund and the rider must inform a Commissaire of their withdrawal. Failure to notify may result in a fine.
- *Discounts offered for registration in a second event, is at the organizer's discretion.*

RACE SCHEDULE:

Sign in/Registration: 9:00am - 5:00pm

Category	Start Time	Distance	Laps
Master 50+	10:00am	40km	22
C / D	11:15am	50km	28
B	12:30pm	40km	22
Kids's Event	2:00pm	Not OC Sanctioned	
U15 Boys / U15 Girls	2:30pm / 2:31pm	14km	8
U17 Boys / U17 Girls	3:00pm / 3:01pm	20km	10
Women A	3:40pm	54km	30
Women B / Master Women	3:41pm	40km	22
A	5:15pm	72km	40

Ontario Cup Points

- The top 15 riders at each OCup event in their respective category will earn:

Place	Points
1 st Place	25 Points
2 nd Place	20 Points
3 rd Place	16 Points
4 th Place	13 Points
5 th Place	11 Points
6 th Place	10 Points
7 th Place	9 Points

Place	Points
8 th Place	8 Points
9 th Place	7 Points
10 th Place	6 Points
11 th Place	5 Points
12 th Place	4 Points
13 th Place	3 Points
14 th Place	2 Points

EQUIPMENT

- The gear and equipment restrictions will follow the 2025 Cycling Canada Companion Guide
- The wearing of an approved helmet is mandatory
- UCI rule 1.3.018: only wheel designs granted prior approval by the UCI may be used. Consult the list of approved non-traditional wheels here.

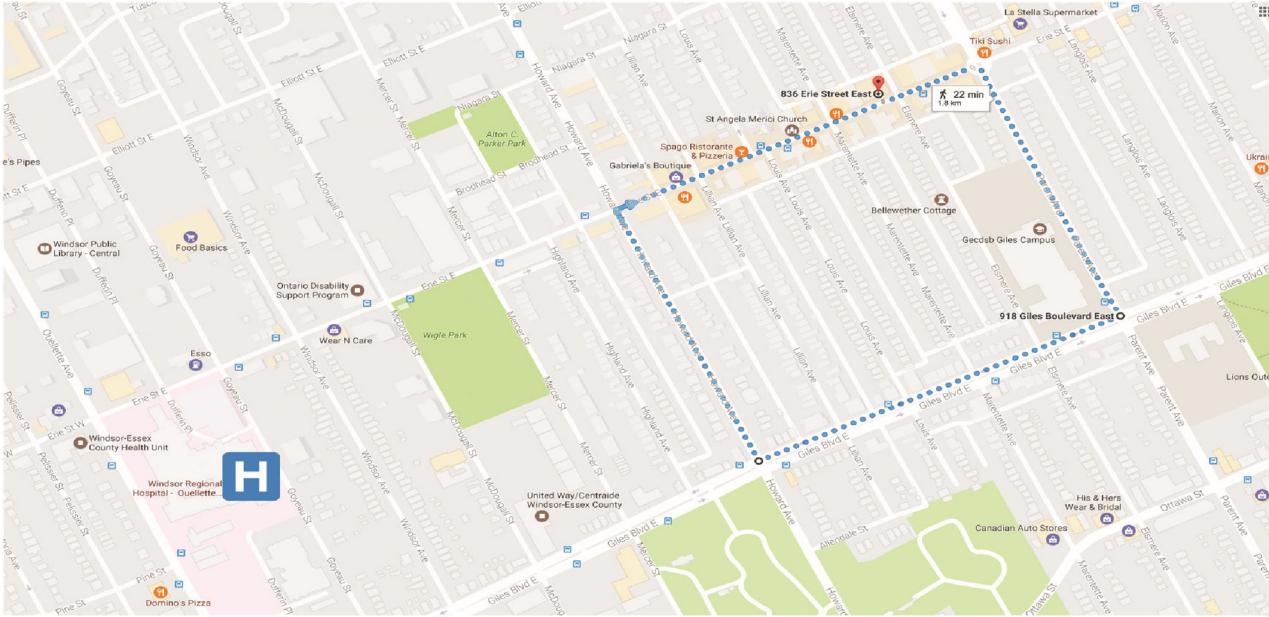
- Only standard handlebars are permitted. Handlebar extensions, including time-trial bar extensions or other types of tri-bars are not permitted.
- Only bicycle conforming to UCI rules 1.3.001-1.3.025 are permitted for use.
- Racers in Ontario must comply with UCI regulation 1.3.022 that requires brake levers to have a maximum inclination of ten (10) degrees
- Riders are required to wear jerseys corresponding to the club or team printed on their license.
- OC does not permit the use of Go Pro's or any other type of filming devices attached to themselves or mounted on their bicycles while racing at an Ontario Cycling event.
- Independent riders are required to wear a plain-colored jersey with no significant logos, team names or advertising displayed on them.
- Sleeveless jerseys are not permitted
- There will be no neutral service available. There will be a support car behind the last wave of riders on course, not behind each race. Should a rider have a mechanical error they will be picked up by the follow car on course
- Per Cycling Canada rule 1.3.031 N): At all times when participating in or preparing for an event held in Canada, all licensees who are mounted on a bicycle shall wear a securely fastened helmet that meets a recognized cycling standard for the specific discipline. Riders shall provide documented proof of this such as a manufacturer's label, upon request by event officials
- The use of glass containers is strictly prohibited during the race.

NUMBER PLACEMENT

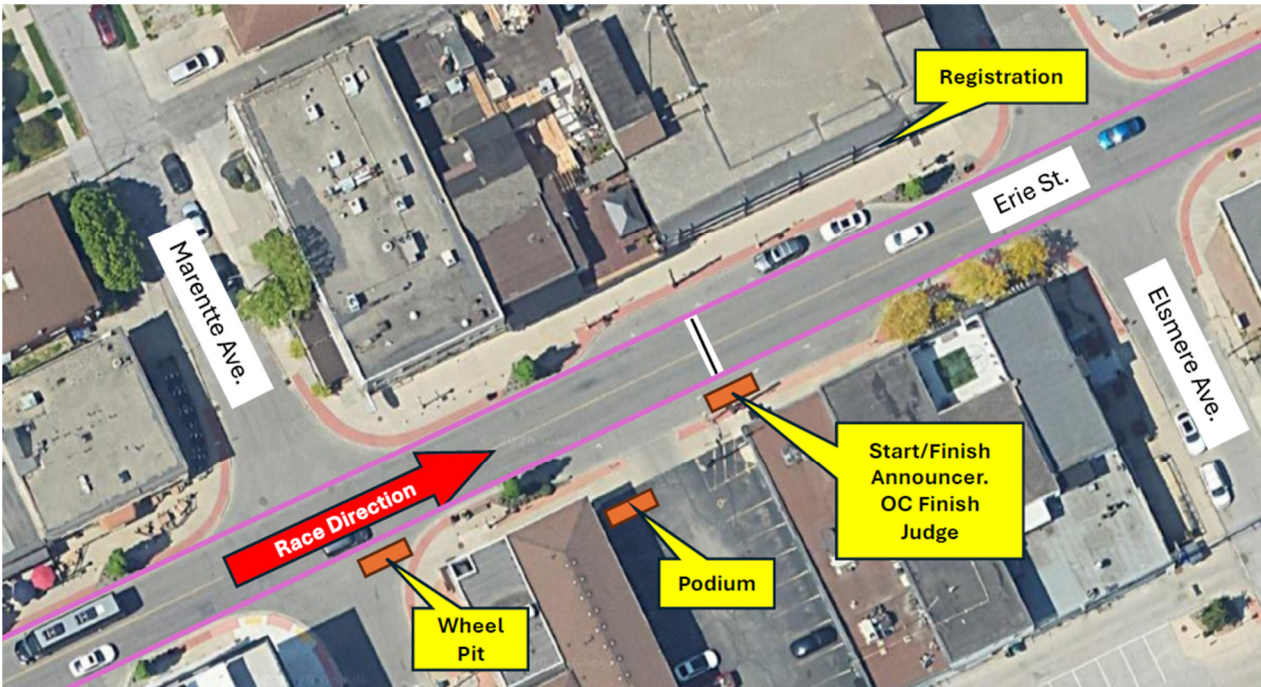
- Numbers must be placed on the right hip and lower right back. Your number must be visible to the camera, on the right side of the road. No altering of the race numbers is allowed.




COURSE MAP



Start/Finish – Registration – Wheel Pit



COURSE DISTANCE & ELEVATION

Ride	Distance	Elevation Gain	Elevation Loss
	1.77 km	0 m	0 m



EVENT & COURSE SAFETY

- First aid will be provided by Border City EMS who will be located under a tent near the start / finish area.
- For your safety, if you withdraw from the event for any reason, you must inform the nearest Commissaire that you will no longer be racing. Riders not reporting to the Commissaire may be subject to a fine.
- Should a Commissaire or OC representative feel that a rider is unfit to race for any reason, the OC reserves the right to remove the rider from the event, for their own safety and the safety of others.

PARKING



SPECTATORS

- Spectators should always remain off the racecourse and remain behind any fencing around the course
- For your safety there is no climbing and hanging onto structures not designed for those purposes.
- No spectator should be accessing the racecourse any point throughout the event.
- OC does not permit any alcohol consumption at the event. Please refrain from bringing and consuming any alcohol during the event and throughout the event grounds including the racecourse.

NEAREST HOSPITAL

The closest hospital to the course is Windsor Regional Hospital - Ouellette Campus located at the corner of Erie St. and Ouellette Ave. It is 0.5km West of the race course. The Emergency entrance to the hospital is on Goyeau St. between Erie St. and Giles Blvd.

EMERGENCY NUMBER: 911

ACCOMMODATION

Official accommodation provider is local cyclist and racer Greg Brklacic at: Stonecroft Inn

3032 Dougall Ave.

Windsor, ON N9E 1S4

519-969-7600/800-665-6296

greg@stonecroftinn.com



GPS ADDRESS OF THE START/FINISH

836 Erie Street East, Windsor, Ontario, Canada

AWARDS

- Medals will be awarded to the top three (3) finishers in each category. Top 5 finishers are required to attend the presentation and are expected to wear their competition uniform for photos.
- Should categories be combined because of low participation numbers, results will be broken out for awards. Awards will be awarded based on the results of each category separated.
- Riders must attend the awards ceremonies or risk forfeiting their awards.
- Podium protocol shall be enforced, and fines issued to those who fail to comply.
- Riders must wear their competition uniform for medal presentations. Hats and/or eyewear are prohibited.
- Medal presentations will take place following the conclusion of each race.

PRIZES

	A	B	C	D	Master 50+	Women A	Women B	Master Women
1st	\$750	\$250	\$250	\$250	\$250	\$750	\$250	\$250
2nd	\$550	\$175	\$175	\$175	\$175	\$550	\$175	\$175
3rd	\$350	\$125	\$125	\$125	\$125	\$350	\$125	\$125
4th	\$200	\$75	\$75	\$75	\$75	\$200	\$75	\$75
5th	\$150	\$50	\$50	\$50	\$50	\$150	\$50	\$50
6th	\$125							
7th	\$100							
8th	\$90							
9th	\$80							
10th	\$70							
11th	\$60							
12th	\$50							
13th	\$50							
14th	\$50							
15th	\$50							

OVER \$9,000 IN PRIZES AND PRIMES

PRIMES: Yes there will be prizes!

ALL PRIMES are \$50 minimum (no merchandise). ALL ABOVE RACES will have multiple prizes.

NOTES / CAVEATS:

- All race categories that are “prized” will also have a podium.
- Final purse distribution for each respective category on race day is based on final number of registered participants and solely at the discretion of TDVI organizers.

- In the last 5 years, the TDVI paid out the total purse in all race categories EXACTLY as advertised. While we cannot guarantee payouts, we are confident that the purse payouts as noted for each category can be achieved.

GENERAL EVENT RULES AND REGULATIONS

- The races will be held under the rules of the UCI with CC and OC modifications.
- The CC & OC rules are available on-line at:
www.ontariocycling.org/commissaires/commissaires-rules/
- The penalty scale of the OC rule book will be applicable.
- Registration closes 30 minutes before the start of each race.
- All riders must sign in at registration.
- U.S. riders must present a UCI licence in order to enter this event. USAC Domestic Licences are not allowed in Canada.
- All foreign licensed riders other than U.S. riders must produce a letter of permission from their country's federation.
- An OC representative will be present at the race to assist with rider licensing issues.
- Races will start promptly at the indicated start times.
- There will not be a team managers meeting.
- There will not be any team vehicles or coach/parent ride-a longs permitted on the course.
- Any rider dropping out of the race shall immediately notify a commissaire.
- Awards will be presented according to the published schedule. Top-3 finishers are required to attend award presentations or risk forfeiting their awards. Riders must wear their competition uniforms for the presentation.
- Race is on rented private property and will be held completely on private, closed roads. Marshalls will be stationed at corners.
- In case of lightning, the race may be delayed or cancelled. If you are informed that the race has been stopped due to lightning, you are advised to seek shelter until the race can resume. No refunds will be issued.
- For your safety, if you withdraw from the event for any reason, you must inform the nearest Commissaire that you are no longer racing. Any unreported DNF may result in a severe penalty.
- You are required to wear an approved, regulation cycling helmet at all times while astride your bike, from the moment you arrive at the race until you leave. Non-compliance may result in a severe penalty.

SPECIFIC CRITERIUM COURSE RULES

- As this is a criterium race, riders will be given free laps for mishaps (e.g. crashes and punctures). Improperly maintained bicycles resulting in equipment failure is not considered a mishap. Riders suffering mishaps shall head to the designated pit area via any means other than travelling backwards on the course, report to the Commissaire, and make repairs. At the direction of the Commissaire only, riders will be allowed to resume the race at the same location in the pack where they had their mishap.
- The pit will be closed when there is 5 km left in the race from the perspective of the race leader. No more free laps will be given after this point.
- There is no outside feeding allowed in this race
- Lapped riders may be pulled at the order of the Commissaires, either after being overtaken or just before being overtaken. Otherwise, lapped riders must remain separate, even when being overtaken by riders in their own group.